



One Earth Solar Farm

Volume 5 Reports and Statements [EN010159]

Consultation Report

Appendices C-1 – C-4

February 2025

Document Reference: EN010159/APP/5.1

Revision 01

Infrastructure Planning (Applications: Prescribed Forms and Procedure) Regulations 2009
- Reg 5 (2) (q)

Contents

Appendix C-1 – Informal consultation on the draft SoCC

Appendix C-1.1 –Email inviting informal consultation on the draft SoCC

Appendix C-1.2 – Draft SoCC for informal consultation

Appendix C-2 – Regard had to host authority informal feedback on draft SoCC

Appendix C-3 – Formal consultation on the draft SoCC

Appendix C-3.1 – Emails inviting formal feedback on draft SoCC

Appendix C-3.2 – Draft SoCC for formal consultation

Appendix C-4 – Regard had to host authority formal feedback on draft SoCC

Appendix C-1 – Informal consultation on the draft SoCC

Appendix C-1.1 –Email inviting informal consultation on the draft SoCC

Sent: 05 February 2024 13:52
To: [REDACTED]
Cc: [REDACTED]
Subject: OESF - Draft SoCC
Attachments: OESF SoCC v2.docx

Dear [REDACTED]

Ahead of our meeting on 9th February, please see attached the draft SoCC for discussion. Please be advised that this is not the statutory consultation on the SoCC, but an informal consultation on our draft SoCC to get your early views. We will conduct the formal 28-day consultation later this spring, ahead of the statutory community consultation.

Looking forward to discussing with you later in the week, but if you have any queries ahead of speaking, please let me know.

Kind regards,

[REDACTED]
MPlan MRTPI
Senior Associate



Chartered Surveyors & Town Planners
69 Carter Lane, London, EC4V 5EQ

DWD

DWD is the trading name of DWD Property and Planning Limited, a subsidiary of RSK Environment Limited. Registered in England No. 15174312. Registered Office: Spring Lodge, 172 Chester Road, Helsby, Cheshire, England, WA6 0AR. This e-mail (and any attachments) may be confidential and privileged and exempt from disclosure under law. If you are not the intended recipient, please notify the sender immediately and delete the email. Any unauthorised disclosure, copying or dissemination is strictly prohibited.

CAUTION: This email originated from outside of the organisation. Do not click links or open attachments unless you recognise the sender and know the content is safe.

Appendix C-1.2 – Draft SoCC for informal consultation

(blank)

(Front cover)

One Earth Solar Farm Statement of Community Consultation

February 2024

DRAFT

Introduction

One Earth Solar Farm Ltd is inviting feedback from the local community on its proposals for One Earth Solar Farm as part of a public consultation from (dates TBD) 2024.

One Earth Solar Farm is a proposed new solar farm with battery storage (the Project) that would help meet the country's need for low-carbon, homegrown energy. The Project is located at the border of Nottinghamshire and Lincolnshire and would connect into the grid at High Marnham substation. It is being brought forward by One Earth Solar Farm Limited, a joint venture between PS Renewables and Ørsted.

Because of its size, One Earth is considered a Nationally Significant Infrastructure Project (NSIP). The Planning Act 2008 and associated legislation and guidance set out the planning process for NSIPs and require that we apply for a type of planning approval known as a Development Consent Order (DCO) to build and operate it. Unlike planning applications which are determined by local authorities, NSIPs are submitted to and decided at the national level by the relevant Secretary of State.

The Project is still in the early stages of its development, and consultation is an important part of our development process. We want to hear the views of local residents, technical experts, and elected representatives to help inform the design of One Earth. This feedback will help us develop our plans responsibly, in a way that is sensitive to the local environment and community. We have already completed one stage of consultation from 27th September to 8th November 2023 on our early designs. Although this consultation was informal, the feedback we received is being taken into account to inform the project design as well as our approach to consultation, which is set out in this document.

We have prepared this document, known as a Statement of Community Consultation (SoCC), in accordance with Section 47 of the Planning Act 2008. It explains how we plan to consult with people living in the vicinity of the Project about our proposals. It will be published according to the requirements of the Planning Act, and includes:

- Information about the companies behind One Earth and the Project;
- An explanation of the planning process for One Earth including pre-application consultation and environmental assessments;
- Our approach to community consultation including who we will consult, when, how, and what about;
- How we will let people know about the consultation, provide information, and receive feedback; and,
- The next steps after consultation, including how we will have regard to the feedback we receive.

About Us

The Project is being brought forward by One Earth Solar Farm Ltd, which is a joint venture between PS Renewables and Ørsted.

PS Renewables

Established in 2012, PS Renewables has rapidly become one of the UK's largest renewable energy development, construction, and operation companies. Alongside an existing solar farm portfolio totalling over 300MW, PS Renewables is one of the UK's largest developers of solar NSIPs, including Longfield Solar Farm, which received consent last year.
(insert map of projects)

Ørsted

Ørsted is taking tangible action to create a world that runs entirely on green energy. Within the UK, Ørsted is a leading offshore wind developer. It presently operates 12 offshore wind farms alongside onshore wind farms in Scotland, and energy storage. Ørsted is committed to ensuring that its presence contributes to sustainable growth and development, helping to support UK net zero targets and benefit the communities in which it operates.

The Project Team

PS Renewables and Ørsted are being supported in developing One Earth by an experienced team of specialists in design, planning, landscaping, ecology and consultation topics.

(insert logos, and org chart)

(Page 4)

About One Earth

One Earth Solar Farm is a proposed new solar farm with battery storage and associated infrastructure located at the border of Nottinghamshire and Lincolnshire that would help meet the country's need for low-carbon, homegrown energy.

Over the next three decades, the country needs to undergo a clean energy transformation to combat climate change and enhance energy security. We must change the way we power our homes and businesses, get around, and manage our resources while boosting our supply of clean energy.

As we phase out older forms of power generation, such as the coal-fired power station at High Marnham, new renewable energy sources must be developed to replace them. At the same time, we are relying more and more on electricity in our daily lives, as petrol cars and gas boilers are phased out, increasing demand for electricity.

The Project could make a significant contribution to meeting this need. We have an agreement to supply 740 MW to the National Grid, which is enough to power more than 200,000 UK homes each year!

(insert bubbles:

(icon of lightning bolt – 740 MW grid connection)

(icon of house – Enough to power more than 200,000 homes!)

(insert high level masterplan showing project boundaries)

Components of a Solar Farm

In order to collect energy from the sun and transfer it to the National Grid, the Project would include the following components:

- (1) Solar photovoltaic (PV) panels – Ground-mounted solar panels collect energy from sunlight and turn it into electricity in the form of low voltage, direct current (DC).
- (2) On-site cabling – Underground cables connect the solar PV panels to other parts of the solar farm.
- (3) Solar stations – Stations prepare the electricity to connect to the grid, including an inverter to convert the electricity from direct current (DC) to alternating current (AC), and a transformer to ‘step up’ the voltage.
- (4) On-site substation – Cables bring electricity from across the site together at a substation, which combines the power sources together and ‘steps up’ the voltage again, so that the energy is ready to enter the national grid.
- (5) Battery Energy Storage System (BESS) – The primary purpose of the BESS is to store the energy generated by the solar photovoltaic (PV) panels at times when it is not needed by the National Grid and then release it to the grid when it is needed most. Additionally, the BESS will also provide vital grid services which would include the ability to take energy from the National Grid and store it during periods of low demand (when it could otherwise be wasted) and release it to the National Grid when homes and businesses most need it.
- (6) Grid connection – The electricity will enter the National Grid at the High Marnham substation, and then go on to power homes and businesses locally and nationwide.

(insert wire diagram of solar components)

The Planning Process

Because One Earth would produce more than 50 MW of energy, it is considered a Nationally Significant Infrastructure Project (NSIP).

The Planning Act 2008 and associated legislation and guidance sets out the planning process for NSIPs and requires that we apply for a Development Consent Order (DCO) to build and operate One Earth. Unlike planning applications, which are determined by local authorities, NSIPs are submitted to and decided at the national level. We will submit our DCO application to the Planning Inspectorate (PINS), an independent body that administers the process of reviewing and examining the application on behalf of the Secretary of State. After examination, the Examining Authority will make a recommendation about whether or not to approve the Project, but the final decision will be made by the Secretary of State.

Pre-Application Consultation

Consultation is an important part of the DCO process; before we submit our DCO application, the Planning Act 2008 requires us to consult on our proposals. For One Earth, we aim to consult early and often, throughout the project's development to ensure valuable local knowledge is built into our proposals. Under sections 42 and 47 of the Planning Act 2008, we must consult with:

- Local authorities and parish councils in which the Project is located or which neighbour the local authorities and parish councils which are hosting the Project,
- Persons that have an interest in the land affected by the Project, including landowners, occupants and tenants;
- Certain organisations and technical bodies (like Historic England and the Environment Agency) which have been prescribed by the Planning Act 2008, and
- The local community.

Consultation and the Design Process

The design process for One Earth is iterative, which means that there will be several versions of the design as the project develops. Feedback from consultations and results of environmental assessments will inform our evolving proposals at each stage. We have carried out one stage of informal consultation already and anticipate at least one further round of consultation:

1. Non-Statutory Consultation: 27 September – 8 November 2023
This first consultation was on our initial proposals for One Earth.
2. Statutory Consultation: (dates TBD 2024)
The second consultation will be on our revised proposals, which have been updated based on feedback from the first consultation and ongoing environmental assessments. This will be considered a 'statutory consultation', subject to the approach described in this

document and the requirements of the Planning Act and associated guidance. Feedback from this consultation will inform the updated design we submit in the DCO application.

DRAFT

Environmental Impact Assessment

Due to the size and nature of the Project, it is considered 'EIA Development', which means that we will conduct an Environmental Impact Assessment (EIA) which we will report on in an Environmental Statement in our DCO application. The EIA will assess the Project's likely significant effects on the environment in accordance with the requirements of the Infrastructure Planning (Environmental Impact Assessment) Regulations 2017. If we identify any likely significant impacts, we will also explain how we propose to mitigate them.

Scoping

An applicant for a DCO can ask the Secretary of State for her opinion on the scope of the EIA and the level of detail to be presented in the EIA. One Earth Solar Farm Limited applied to the Secretary of State for a Scoping Opinion on 13 November 2023 and PINS subsequently provided the Scoping Opinion on behalf of the Secretary of State on 22 December 2023. The Scoping Opinion will now be used to guide how we will complete our EIA.

Preliminary Environmental Impact Report

We are required to prepare a 'Preliminary Environmental Information Report' or 'PEIR' which will be published as part of the statutory consultation. The PEIR must include the information which is reasonably required for consultation bodies to develop an informed view of the likely significant environmental effects of the Project.

DCO Application

Our DCO application will include a Consultation Report that sets out the consultation we have undertaken as part of the pre-application process. In the Consultation Report we will also explain how we have had regard to the consultation feedback we have received. It will also explain if we have made changes to the Project design as a result of consultation responses received.

(insert graphic of design process)

Together, the feedback from consultations and results of environmental assessments will help refine our proposals for One Earth.

(text box: To learn more about the PINS and NSIP process, visit the Planning Inspectorate's website: infrastructure.planninginspectorate.gov.uk

(Insert Project Timeline Across Both Pages 6 and 7)

Our Approach to Community Consultation

We aim to ensure that anyone who wants to engage in the consultation is able to do so, by providing a variety of ways people can learn about the proposals and provide their feedback.

We have developed the approach set out in this document taking into account what has worked well in previous rounds of consultation, feedback from local authorities, and best practice, in addition to requirements included in the Planning Act 2008, EIA regulations, associated guidance and PINS advice notes.

We will structure our consultation with accessibility at its heart, making sure it is as easy as possible to take part. This means providing materials both in print and online, using easy to understand, non-technical language and providing alternative formats if requested. We will schedule events for the local community to learn about our proposals in locally convenient locations, at various days of the week and times of day to accommodate different work/life schedules, as well as provide both in-person and virtual options to attend. We will also reach out to gateway organisations for hard-to-reach groups, so that we can hear from as many voices as possible.

Non-Statutory Consultation

During our first consultation held over six weeks in Autumn 2023, we presented our early designs for One Earth. We held in-person and online events to present information about One Earth, in addition to providing materials through our website and in hard copy. We asked for feedback on the proposed development as well as our consultation approach, which has helped inform our next phase of consultation. Feedback included requests for additional visualisations and project details, which we will provide at the statutory consultation.

Feedback from Local Authorities

Our approach to consultation has been informed by feedback from local authorities, to ensure that we are utilising local knowledge to inform an effective consultation process. From X to X, we consulted with the local authorities on our proposed approach to the next stage of consultation, as laid out in this document. Our strategy has been updated to include their feedback (insert details here). **XX confirmed that they supported this approach.**

Statutory Consultation

During our statutory consultation from (dates TBD) 2024, we will present our updated proposals and ask for your feedback.

What are we consulting on?

During the statutory consultation, we will be asking for your views on:

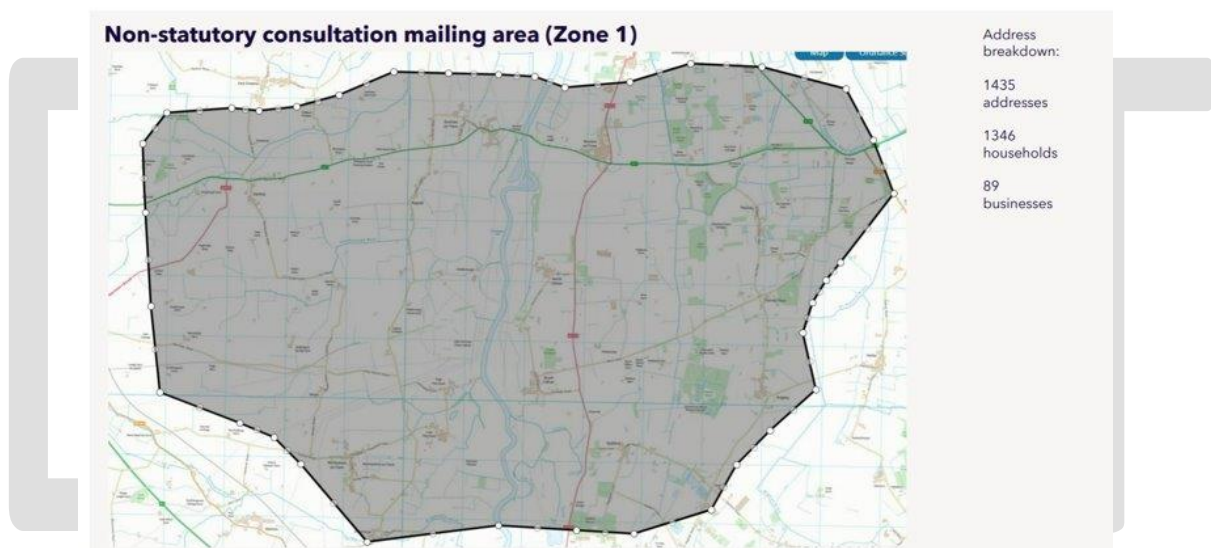
- Our proposals for One Earth Solar Farm as a whole;
- The location of the project's components, including the solar panels, substations, and batteries;
- The PEIR and potential impacts from the project during construction, operation, and decommissioning to the local environment and community;
- Our proposals for mitigating the potential impacts and environmental enhancements; and
- Potential benefits that the project could include for the local environment and the community.

Who are we consulting?

We want to consult widely with anyone who has an interest in or feels impacted by One Earth Solar Farm.

Core Consultation Zone

We have identified an area that includes around 1,400 addresses by drawing a shape 2km from the Project's boundaries, and then expanding further to ensure entire villages were included. Being in close proximity to the proposed development, this zone was selected as the group of homes and businesses that would have the greater interest in the project.



Additional members of the community, groups, and elected officials

We recognise that there may be other individuals and organisations that work, visit, or have an interest in the project site but do not live within the consultation zone. We have identified organisations including community groups and elected officials who represent the project location and serve the broader community, including organisations that support seldom heard groups.

Consultation Zones

We have defined two different zones of community consultation based on proximity to the site, which will be contacted and notified through different methods, as described below.

Zones of Consultation	Description
Zone 1	Anyone living or working within the consultation zone, roughly 2km from the project boundary

Zone 2

Anyone living or working in the districts including Newark and Sherwood, West Lindsey, Bassetlaw

Publicising the Consultation

To ensure that local residents and other interested parties are aware of the upcoming consultation and how they can take part and in compliance with Section 48 of the Planning Act 2008, we will publicise the consultation through several methods. At the start of the consultation, we will:

Actions	Zone 1	Zone 2
Send a leaflet to the core consultation zone	X	
Place posters in local information points including village halls, churches, and other public information boards	X	
Advertise in the local paper and online	X	X
Place notices in national and local papers	x	x
Email elected officials and community groups	X	X
Send a press release to local and national media outlets	x	x
Update the dedicated project website	x	x

Providing Information about One Earth

We will provide a variety of opportunities and produce a range of materials to provide detailed information about the proposals for One Earth.

Meetings and Events

We will host in-person events where members of the community can learn about our proposals from members of the project team. The in-person events have been located in Zones 1 and 2 to provide a wide geographic spread. We will also host a webinar online for those who cannot attend an in-person event. We will also offer to host briefing sessions for elected representatives.

Date	Location
TBD	St Peters Church Newton on Trent, Lincoln LN1 2JS
TBD	South Clifton Coronation Hall South Clifton, NG23 7AN
TBD	Dunham on Trent Village Hall, Dunham NG22 0FJ
TBD	Normanton Village Hall Normanton on Trent
TBD	Webinar
11 May	Nottinghamshire Show, Newark Showground

*Dates TBD based on availability and project schedule

Information Materials

We will produce a range of documents and materials to provide more information about One Earth which will be available through our dedicated project website: oneearthsolarfarm.co.uk, including:

- A leaflet with a short, non-technical explanation of the proposals and consultation information,
- A project booklet that provides a non-technical explanation of the proposals and the preliminary results of environmental assessments,
- The Preliminary Environmental Information Report which provides the preliminary results of the environmental impact assessment we have undertaken,
- A questionnaire to provide feedback on the proposals (provided in both printed and digital version),
- A presentation for use in meetings or webinars,
- Information boards to be used in public events and a virtual exhibition, and
- Maps

Community Access Points

We will also make hard copies of this SoCC, the project booklet, and questionnaire available in convenient locations across the Zones 1 and 2 during the consultation period. Please check opening hours before traveling.

Locations	Opening Hours
South Clifton Sports Pavilion, South Clifton, Newark NG23 7AH	
The Courtyard Tea Room, Collingham Rd, Newton on Trent, Lincoln LN1 2LL	09:00-15:00 Tues-Fri
Saxilby Library, St Andrews Centre, William St, Saxilby LN1 2LP	10:30-16:00 Tues, 10:30-13:00 Wed- Fri
St Helen's Church, Main Street, Thorney, Newark, NG23 7EU	11:00-16:00 Sundays
Bassetlaw District Council, Queens Buildings, Potter St, Worksop S80 2AH	09:00-17:00 Mon-Fri
Newark and Sherwood District Council, Castle House, Great North Rd, Newark NG24 1BY	09:00-17:00 Mon-Fri
West Lindsey District Council, Guildhall Marshall's Yard, Marshalls Yard, 13b Beaumont St, Gainsborough DN21 2NA	09:00-17:00 Mon-Fri

Communications Channels

Throughout the consultation, we will operate the following communications channels for individuals to contact us with any questions:

- Project Website: www.oneearthsolar.co.uk
- Project email address: info@oneearthsolar.co.uk
- Freephone: [0800 169 6507](tel:08001696507) (Answered from 09:00-17:00 on weekdays)
- Freepost: One Earth Solar Farm, Freepost SEC NEWGATE UK LOCAL

Changes

If there are any changes needed to the arrangements described above including any changes to guidance due to COVID-19, we will notify the community by writing to addresses within Zone 1, elected officials, and community groups and updating our website.

Receiving Feedback

Individuals can submit their written feedback by (date TBD) through various methods, including:

- By completing a questionnaire either in hard copy or online
- By writing to the contact details above

After the Statutory Consultation

Once the consultation has concluded, we will review the feedback we have received.

Any comments received will be analysed by One Earth Solar Farm Ltd and any of its appointed agents. Copies may be made available in due course to the Secretary of State, the Planning Inspectorate and other relevant statutory authorities so that feedback can be considered as part of the DCO process. We will request that any personal details are not placed on public record and will be held securely by One Earth Solar Farm Ltd and its agents in accordance with the data protection law and will be used solely in connection with the consultation process and subsequent DCO application and, except as noted above, will not be passed to third parties.

All feedback will be considered alongside the ongoing environmental assessments to help inform the updated design that will be submitted in the DCO application. Within the DCO application, we will include a Consultation Report that shows how we have had due regard to all consultation feedback, as well as how we complied with the approach to consultation set out in this document.

(separate text box and qr code)

The Planning Inspectorate has also published details of how it manages comments received in a Privacy Notice available on its website:

https://assets.publishing.service.gov.uk/government/uploads/system/uploads/attachment_data/file/879604/Privacy_Note_Final_15042020.pdf

Ongoing Engagement

Our communications channels will remain open throughout the pre-application process to answer any questions from the community. We will provide a community update newsletter after the consultation has ended to describe the project's next steps. If there are any significant changes to the project, we may be required to host a targeted consultation on the project changes. In that case, we would notify the community in line with the requirements of the Planning Act 2008, PINS guidance, and the approach described in this document.

(Back Cover)

Get in Touch

- Visit: www.oneearthsolarfarm.co.uk
- Email: info@oneearthsolarfarm.co.uk
- Call: [0800 169 6507](tel:08001696507)
- Write: One Earth Solar Farm, Freepost SEC NEWGATE UK LOCAL

DRAFT

Appendix C-2 – Regard had to host authority informal feedback on draft SoCC

Table C-1. Informal feedback from host authorities regarding draft SoCC and the Applicant's response

Consultee	Feedback	Applicant Response
Newark and Sherwood District Council (NSDC)	Clarify that the first consultation was non-statutory	We avoid using the term 'non-statutory' until it has been defined later in the text.
NSDC	Request to add flowchart to explain development process	We included a timeline and a reference to the PINS website for further information on the examination process.
NSDC	Request to link to scoping report on PINS website	We included a link and QR code to the PINS website.
NSDC	Request for timescale	This is included.
NSDC	Request for more information on other DCO applications	Because other DCO projects are outside of our project scope, we have not included additional information about them.
NSDC	Added text to clarify that we are seeking views on 'Anything else you think we need to consider'	The additional text was included.
NSDC	Added text to clarify that the communications lines are open beyond the consultation period.	This was included.
NSDC	Request for a map that shows the consultation zone 1 with the project boundary	This was included.
NSDC	Request for a list of elected officials.	This was included.
NSDC	Request to see list of community groups	This was sent.

Consultee	Feedback	Applicant Response
NSDC	Concerns about reaching hard-to-reach groups.	We discussed that the list of community groups included hard-to-reach communities.
NSDC	Request to see copies of all consultation materials with the SOCC	We explained that this is not possible because the SOCC will be published in advance of the start of consultation, when those materials are ready to be published.
NSDC	Questions about whether the consultation zone includes homes and businesses	We clarified that the consultation zone includes all addresses, both residences and business properties.
NSDC	Question about the difference between advertisements and notices	We clarified the text to include both
NSDC	Questions about whether technical specialists will attend public events	We clarified the text to make it clear that the project team will include technical experts.
NSDC	Question about why only four events are proposed and whether this meets 'good practice' for holding 6 events	There is no standard good practice around the number of events to hold. They are determined by the availability of suitable venues. However, we have included an additional event in South Clifton towards the end of the consultation period.
NSDC	Request for an additional webinar	We explained that webinars are often very poorly attended, citing the evidence from the non-statutory consultation.
NSDC	Request for event times to ensure convenience and promote attendance	This was included. While the draft draft SOCC included placeholders for event times, the updated SOCC included specific 4-hour events, arranged to be different times of day, including two Saturday events and one weekday event outside of traditional 9am-5pm working hours.

Consultee	Feedback	Applicant Response
NSDC	Request for interactive maps	We find that interactive maps showing just the project boundary against a underlying map layer do not provide the context of the offsets, landscaping and other components of the masterplan. However, we have opted to include a 3d model which is searchable by location and will be available at events.
NSDC	Request for clarifying text that materials are available in alternative formats on request	This language was added.
NSDC	Request for an additional communications line through social media to be made available	Our digital assessment found that social media is not widely used in the area, so we have opted not to include this as an additional communication line.
NSDC	Question about collecting verbal feedback from events or phone lines	We explained that it is not possible to transcribe all conversations at public events, which are often quite noisy, which is why we need to encourage written feedback for accurate reporting of responses.
NSDC	Request for more clarify on next steps	This section is already included on the following page.
Lincolnshire County Council (LCC)	Request to add additional groups to the community group list, including: <ul style="list-style-type: none"> Lincolnshire Local Nature Recovery Strategy Management Group, Bishop Grosseteste University 	These were both added.

Appendix C-3 – Formal consultation on the draft SoCC

Appendix C-3.1 – Emails inviting formal feedback on draft SoCC

[REDACTED]

From: [REDACTED]
Sent: 05 April 2024 11:49
To: [REDACTED]
Cc: [REDACTED]
Subject: OESF Statement of Community Consultation
Attachments: OESF community groups for SOCC final.docx; One Earth Solar Farm - Statement of Community Consultation final for consultation.pdf

Dear Both,

I am writing to consult you on the attached Statement of Community Consultation (SoCC) for the One Earth Solar Farm as required by the Planning Act 2008, Section 47 (2). The consultation period will be 28 days, from today 5 April to 2 May 2024.

In February, we sent you and the other host local authorities a draft version of this SoCC for informal consultation. The feedback we received has been incorporated in this version wherever possible. For your information, the list of community groups referenced in the SOCC is also attached.

Please let us know if you have any questions and send us any feedback by 2 May.

Kind regards,

[REDACTED]
MPlan MRTPI
Senior Associate



Chartered Surveyors & Town Planners
69 Carter Lane, London, EC4V 5EQ

DWD

DWD is the trading name of DWD Property and Planning Limited, a subsidiary of RSK Environment Limited. Registered in England No. 15174312. Registered Office: Spring Lodge, 172 Chester Road, Helsby, Cheshire, England, WA6 0AR. This e-mail (and any attachments) may be confidential and privileged and exempt from disclosure under law. If you are not the intended recipient, please notify the sender immediately and delete the email. Any unauthorised disclosure, copying or dissemination is strictly prohibited.

CAUTION: This email originated from outside of the organisation. Do not click links or open attachments unless you recognise the sender and know the content is safe.

Appendix C-3.2 – Draft SoCC for formal consultation



One Earth Solar Farm

Statement of Community Consultation

April/May 2024

Introduction

One Earth Solar Farm Ltd is inviting feedback from the local community on its proposals for One Earth Solar Farm as part of a public consultation from 29 May - 9 July 2024.

One Earth Solar Farm is a proposed new solar farm with battery storage (the Project) that would help meet the country’s need for low-carbon, homegrown energy. The Project is located at the border of Nottinghamshire and Lincolnshire and would connect into the National Grid at High Marnham substation. It is being brought forward by One Earth Solar Farm Limited, a joint venture between PS Renewables and Ørsted.

Because of its size, One Earth is considered a Nationally Significant Infrastructure Project (NSIP). The Planning Act 2008 and associated legislation and guidance set out the planning process for NSIPs and require that we apply for a type of planning approval known as a Development Consent Order (DCO) to build and operate it. Unlike planning applications which are determined by local authorities, NSIPs are submitted to and decided at the national level by the relevant Secretary of State.

The Project is still in the early stages and consultation is an important part of our development process. We want to hear the views of local residents, technical experts, and elected representatives to help inform the design of One Earth. This feedback will help us develop our plans responsibly, in a way that is sensitive to the local environment and community. We have already completed one stage of consultation from 27 September

to 8 November 2023 on our early designs. Although this consultation was informal, the feedback we received is being taken into account to inform the project design as well as our approach to consultation, which is set out in this document.

We have prepared this document, known as a Statement of Community Consultation (SoCC), in accordance with Section 47 of the Planning Act 2008. It explains how we plan to consult with people living in the vicinity of the Project about our proposals. It will be published according to the requirements of the Planning Act, and includes:

- Information about One Earth and the companies behind it;
- An explanation of the planning process for One Earth including pre-application consultation and environmental assessments;
- Our approach to community consultation including who we will consult, when, how, and what about;
- How we will let people know about the consultation, provide information, and receive feedback; and,
- The next steps after consultation, including how we will have regard to the feedback we receive.

About Us

The Project is being brought forward by One Earth Solar Farm Ltd, which is a joint venture between PS Renewables and Ørsted.

PS Renewables

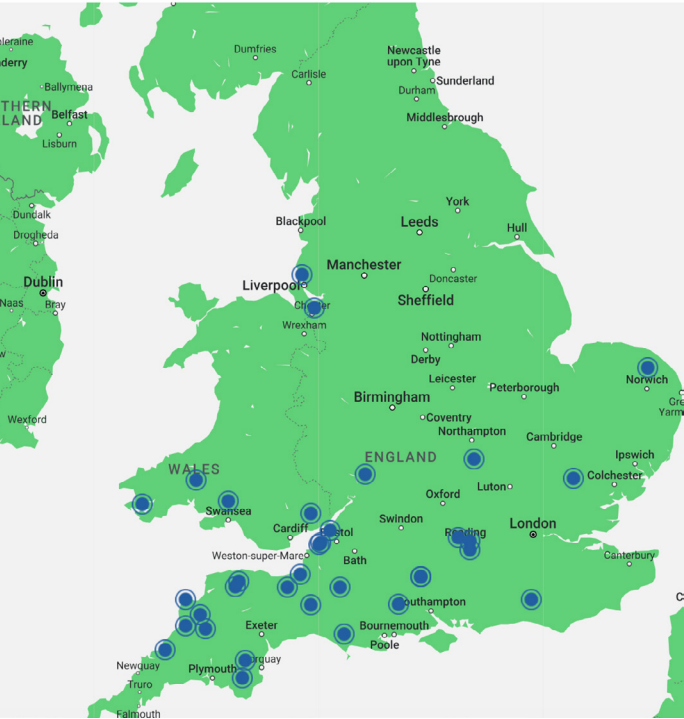
Established in 2012, PS Renewables has rapidly become one of the UK’s largest renewable energy development, construction, and operation companies. Alongside an existing solar farm portfolio totalling over 300MW, PS Renewables is one of the UK’s largest developers of solar NSIPs, including Longfield Solar Farm, which received consent last year.

Ørsted

Ørsted is taking tangible action to create a world that runs entirely on green energy. Within the UK, Ørsted is a leading offshore wind developer. It presently operates 12 offshore wind farms alongside onshore wind farms in Scotland, and energy storage. Ørsted is committed to ensuring that its presence contributes to sustainable growth and development, helping to support UK net-zero targets and benefit the communities in which it operates.

The Project Team

PS Renewables and Ørsted are being supported in developing One Earth by an experienced team of specialists in design, planning, landscaping, ecology and consultation.



Existing PS Renewables Solar Farms.




About One Earth


One Earth Solar Farm is a proposed new solar farm with battery storage and associated infrastructure located at the border of Nottinghamshire and Lincolnshire that would help meet the country’s need for low-carbon, homegrown energy.

Over the next three decades, the country needs to undergo a clean energy transformation to combat climate change and enhance energy security. We must change the way we power our homes and businesses, get around, and manage our resources, while boosting our supply of clean energy.

As we phase out older forms of power generation, such as the former coal-fired power station at High Marnham, new renewable energy sources must be developed to replace them. At the same time, we are relying more and more on electricity in our daily lives, as petrol cars and gas boilers are phased out, increasing demand for electricity.

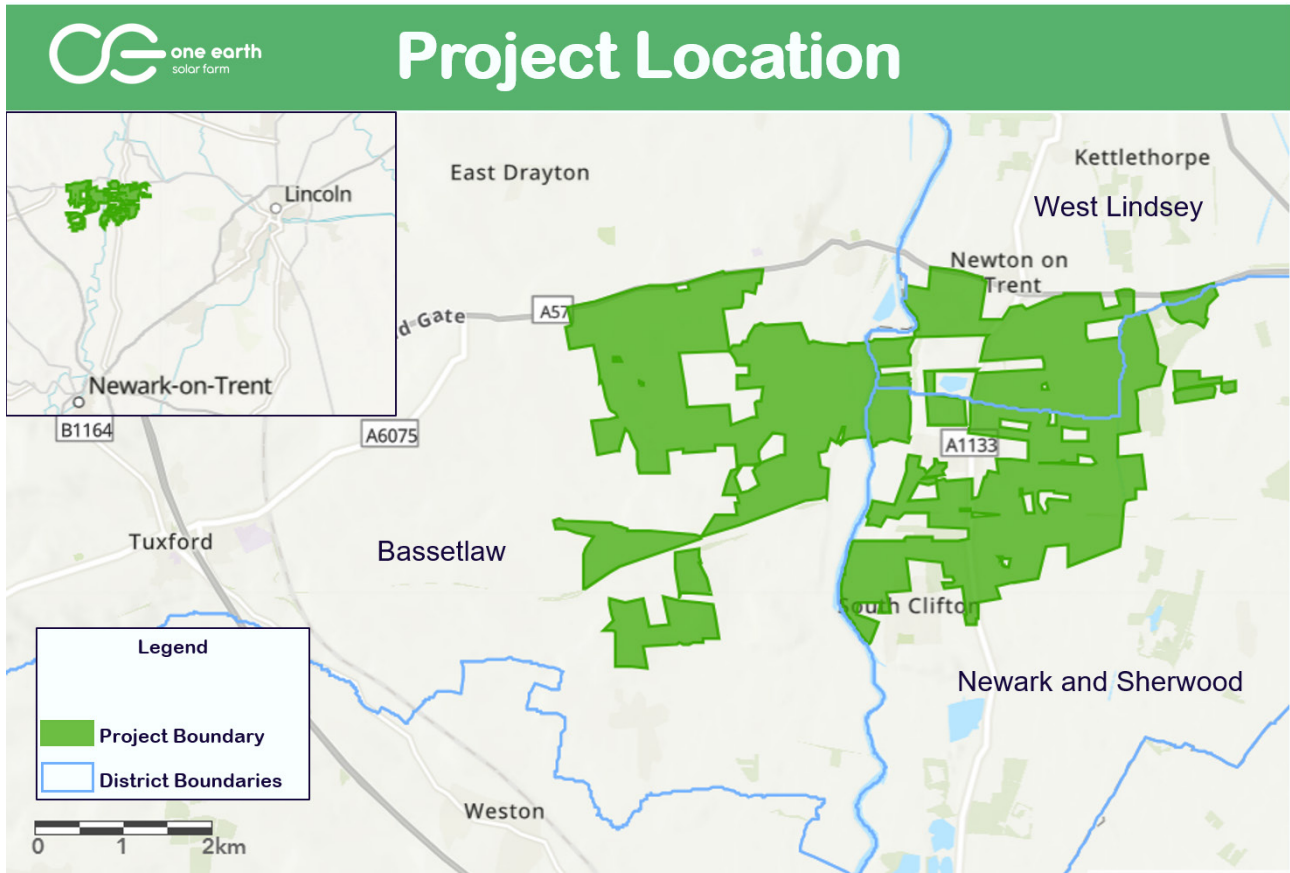


More than 200,000
The project could meet the energy needs of more than 200,000 homes annually



740MW
We have secured a 740MW grid connection agreement with the National Grid

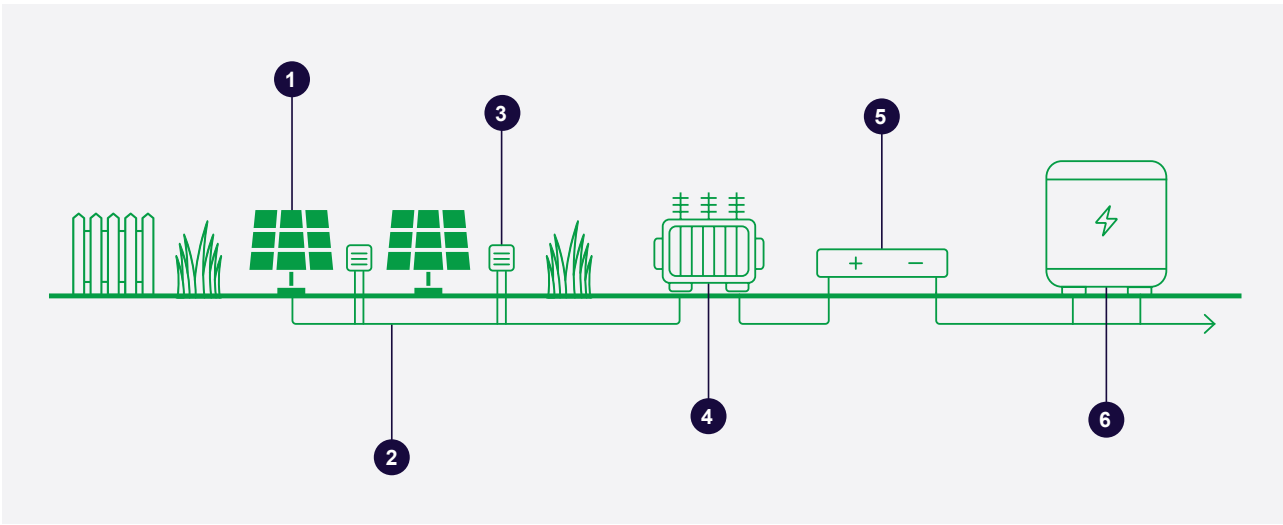
The Project could make a significant contribution to meeting this need. We have an agreement to supply 740MW to the National Grid, which is enough to power more than 200,000 UK homes each year.



Components of a Solar Farm

The Project would include the following components:

- Solar photovoltaic (PV) panels** – Ground-mounted solar panels would collect energy from sunlight and turn it into electricity in the form of low voltage, direct current (DC).
- On-site cabling** – Underground cables would connect the solar PV panels to other parts of the solar farm.
- Solar stations** – These stations would prepare the electricity to connect to the grid. They would include an inverter to convert the electricity from direct current (DC) to alternating current (AC), and a transformer to 'step up' the voltage.
- On-site substation** – Cables would bring electricity from across the site together at a substation, which would combine the power sources together and 'step up' the voltage again, so that the energy is ready to enter the National Grid.
- Battery Energy Storage System (BESS)** – The primary purpose of the BESS would be to store the energy generated by the solar photovoltaic (PV) panels at times when it is not needed by the National Grid and then release it to the grid when it is needed most. Additionally, the BESS would also provide vital grid services by taking energy from the National Grid, storing it during periods of low demand (when it could otherwise be wasted) and releasing it to the National Grid when homes and businesses most need it.
- Grid connection** – The electricity would enter the National Grid at the High Marnham substation, and then go on to power homes and businesses locally and nationwide.



Components of a solar farm

The Planning Process

Because One Earth would produce more than 50MW of energy, it is considered a Nationally Significant Infrastructure Project (NSIP).

The Planning Act 2008 and associated legislation and guidance sets out the planning process for NSIPs and requires that we apply for a Development Consent Order (DCO) to build and operate One Earth. Unlike planning applications which are determined by local authorities, NSIPs are submitted to and decided at the national level. We will submit our DCO application to the Planning Inspectorate (PINS), an independent body that administers the process of reviewing and examining the application on behalf of the Secretary of State. After examination, the Examining Authority will make a recommendation about whether or not to approve the Project, but the final decision will be made by the Secretary of State for Energy Security and Net-Zero.

Pre-Application Consultation

Consultation is an important part of the DCO Process. Before we submit our DCO application, the Planning Act 2008 requires us to consult on our proposals. For One Earth, we will consult early and often, throughout the project's development, to ensure valuable local knowledge is built into our proposals. Under sections 42 and 47 of the Planning Act 2008, we must consult with:

- Local authorities and parish councils in which the Project is located or which neighbour the local authorities and parish councils that are hosting the Project;
- Persons that have an interest in the land affected by the Project, including landowners, occupants and tenants;
- Certain organisations and technical bodies (like Historic England and the Environment Agency) which have been prescribed by the Planning Act 2008; and,
- The local community.

Consultation and the Design Process

The design process for One Earth is iterative, which means that there will be several versions of the design as the project develops. Feedback from consultations and results of environmental assessments will inform our evolving proposals at each stage. We have carried out one stage of non-statutory consultation already and anticipate at least one further round of consultation:

1. **Non-Statutory Consultation: 27 September - 8 November 2023** - This first consultation was on our initial proposals for One Earth.
2. **Statutory Consultation: 29 May - 9 July 2024** - The second consultation will be on our revised proposals, which have been updated based on feedback from the first consultation and ongoing environmental assessments. This is a 'statutory consultation', subject to the approach described in this document and the requirements of the Planning Act 2008 and associated guidance. Feedback from this consultation will inform the updated design we submit in the DCO application.

Environmental Impact Assessment

Due to the size and nature of the Project, it is considered 'EIA Development'. This means that we will conduct an Environmental Impact Assessment (EIA) which we will report on in an Environmental Statement in our DCO application. The EIA will assess the Project's potential effects on the environment in accordance with the requirements of the Infrastructure Planning (Environmental Impact Assessment) Regulations 2017. If we identify any potential significant impacts, we will also explain how we propose to mitigate them.

Scoping

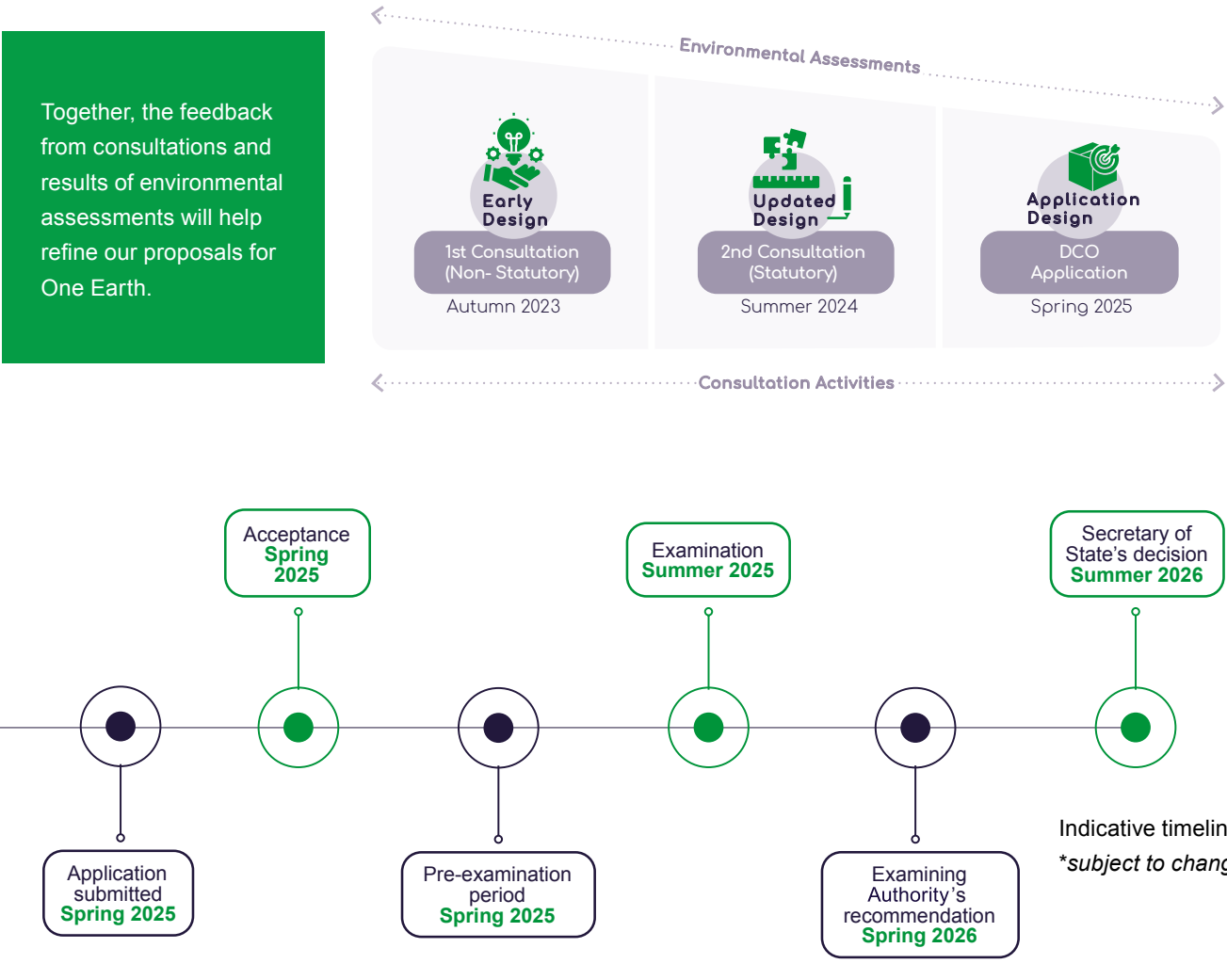
An applicant for a DCO can ask the Secretary of State for her opinion on the scope of the EIA and the level of detail to be presented in the EIA. One Earth Solar Farm Limited applied to the Secretary of State for a Scoping Opinion on 13 November 2023, and PINS subsequently provided the Scoping Opinion on behalf of the Secretary of State on 22 December 2023. The Scoping Opinion will now be used to guide how we will complete our EIA. You can find it on the PINS website [here](#).

Preliminary Environmental Information Report

We are required to prepare a 'Preliminary Environmental Information Report' or 'PEIR' which will be published as part of the statutory consultation. The PEIR must include the information which is reasonably required for consultation bodies to develop an informed view of the likely significant environmental effects of the Project.

DCO Application

Our DCO application will include the Environmental Statement and a Consultation Report that sets out the consultation we have undertaken as part of the pre-application process. In the Consultation Report we will explain how we have had regard to the consultation feedback we have received. It will also explain if we have made changes to the Project design as a result of consultation responses received.



To learn more about the PINS and NSIP process, visit the Planning Inspectorate's website: infrastructure.planninginspectorate.gov.uk

Our Approach to Community Consultation

We aim to ensure that anyone who wants to engage in the consultation is able to do so, by providing a variety of ways people can learn about the proposals and provide their feedback.

We have developed the approach set out in this document taking into account what has worked well in previous rounds of consultation, feedback from local authorities, and best practice. We have also considered requirements included in the Planning Act 2008, EIA regulations, associated guidance and PINS advice notes.

We will structure our consultation with accessibility at its heart, making sure it is as easy as possible to take part. This means providing materials both in print and online, using easy to understand, non-technical language and providing alternative formats if requested. We will schedule events for the community to learn about our proposals in locally convenient locations at various days of the week and times of day to accommodate different work/life schedules, as well as provide both in-person and virtual options to attend. We will also reach out to gateway organisations for hard-to-reach groups, so that we can hear from as many voices as possible.

Non-Statutory Consultation

During our first consultation held over six weeks in Autumn 2023, we presented our early designs for One Earth. We held in-person and online events to present information about One Earth, in addition to providing materials through our website and in hard copy. We asked for feedback on the proposed development as well as our consultation approach, which has helped inform our next phase of consultation. Feedback included requests for additional visualisations and project details, which we will provide at the statutory consultation.

Feedback from Local Authorities

Our approach to consultation has been informed by feedback from local authorities, to ensure that we are utilising local knowledge to inform an effective consultation process. From 5 April to 2 May 2024, we consulted with the local authorities on our proposed approach to the next stage of consultation, as laid out in this document. Our strategy has been updated to include their feedback *(insert details here)*. XX confirmed that they supported this approach.

What are we consulting on?

During our statutory consultation from 29 May – 9 July 2024, we will present our updated proposals and ask for your feedback.

During the statutory consultation, we will be asking for your views on:

- Our proposals for One Earth Solar Farm as a whole;
- The location of the Project’s components, including the solar panels, substations, and batteries;
- The PEIR and potential impacts from the Project during construction, operation, and decommissioning to the local environment and community;
- Our proposals for mitigating the potential impacts and environmental enhancements;
- Potential benefits that the Project could include for the local environment and the community; and,
- Anything else that you think we need to consider.

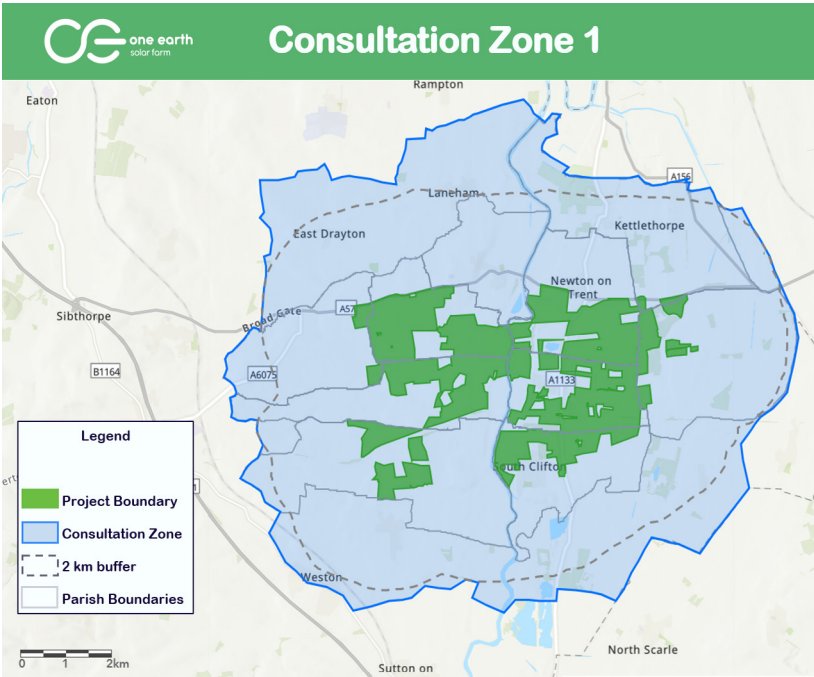


Who are we consulting?

We want to consult widely with anyone who has an interest in or feels impacted by One Earth Solar Farm.

Zone 1: Core Consultation Zone

We have identified an area that includes around 1,500 addresses by drawing a shape 2km from the Project's boundaries, and then expanding further to ensure entire communities were included. Being in close proximity to the proposed development, this zone was selected as the group of homes and businesses that would have the greater interest in the Project.



Zone 2: Additional members of the community, groups, and elected officials

We recognise that there may be other individuals and organisations that work, visit, or have an interest in the Project location but do not live within the core consultation zone. We have identified organisations and community groups that serve the broader community, including organisations that support seldom heard groups. We have also identified elected officials from the host regions where the Project would be located.

Host Regions				
MPs	Counties	Districts	Wards	Parishes
Gainsborough	Lincolnshire	West Lindsey	Torksey	Kettlethorpe
				Newton on Trent
Newark	Nottinghamshire	Bassetlaw	Tuxford and Trent	Dunham on Trent
				Ragnall
				Fledborough
				Darlton
				Marnham
		Newark and Sherwood	Collingham	South Clifton
				North Clifton
				Thorney

Consultation Zones

We have defined two different zones of community consultation based on proximity to the site, which will be contacted and notified through different methods, as described below.

Zones of Consultation	Description
Zone 1	Anyone living or working within the core consultation zone, roughly 2km from the project boundary
Zone 2	Anyone living or working in the districts including Newark and Sherwood, West Lindsey and Bassetlaw

Publicising the Consultation

To ensure that local residents and other interested parties are aware of the upcoming consultation and how they can take part, we will publicise the consultation through several methods. At the start of the consultation, we will:

Actions	Zone 1	Zone 2
Send a leaflet to the core consultation zone	X	
Place posters in local information points including village halls, churches, and other public information boards	X	
Advertise in Lincolnshire and Nottingham Live online and in paper	X	X
Email elected officials and community groups	X	X
Send a press release to local and national media outlets	X	X
Update the dedicated project website	X	X

Providing Information about One Earth

We will provide a variety of opportunities and produce a range of materials to provide detailed information about the proposals for One Earth.

Meetings and Events

We will host in-person events where members of the community can learn about our proposals from members of the project team including technical experts across a variety of relevant topics. The in-person events will be located across Zone 1, to ensure no individual need to travel far to attend an event. We will also host a webinar online for those who cannot attend an in-person event. We will also offer to host briefing sessions for elected representatives.

Date	Location
Friday, 7 June 2024 2 - 6 pm	Dunham on Trent Village Hall, Dunham NG22 0FJ
Saturday, 8 June 2024 12 - 4 pm	St Peters Church Newton on Trent, Lincoln LN1 2JS
Wednesday, 12 June 2024 2 - 6 pm	South Clifton Coronation Hall South Clifton, NG23 7AN
Thursday, 13 June 2024 12 - 4 pm	Normanton Village Hall Normanton on Trent
Tuesday, 18 June 2024 6 - 7 pm	Webinar – Please visit our website to register: oneearthsolarfarm.co.uk
Saturday, 29 June 2024 12 - 4 pm	South Clifton Coronation Hall South Clifton, NG23 7AN

Information Materials

We will produce a range of documents and materials to provide more information about One Earth which will be available through our dedicated project website: oneearthsolarfarm.co.uk, including:

- A leaflet with a short, non-technical explanation of the proposals and consultation information;
- A project booklet that provides a non-technical explanation of the proposals and the preliminary results of environmental assessments;
- The Preliminary Environmental Information Report which provides the preliminary results of the environmental impact assessment we have undertaken;
- A questionnaire to provide feedback on the proposals (provided in both printed and digital version);
- A presentation for use in meetings or webinars;
- Information boards to be used in public events and a virtual exhibition; and,
- Maps.


Community Access Points

We will also make hard copies of this SoCC, the project booklet, and questionnaire available in convenient locations across consultation Zone 1 during the consultation period. Alternative format hard copies of these materials (i.e. large print, braille) will be available upon request. Please check opening hours before traveling.

Locations	Opening hours
South Clifton Sports Pavilion, South Clifton, Newark NG23 7AH	
The Courtyard Tea Room, Collingham Rd, Newton on Trent, Lincoln LN1 2LL	9:00am - 3:00pm Tuesdays - Fridays
Saxilby Library, St Andrews Centre, William St, Saxilby LN1 2LP	10:30 am - 4:00pm Tuesdays, 10:30am - 1:00pm Wednesdays - Fridays
St Helen's Church, Main Street, Thorney, Newark, NG23 7EU	11:00am - 4:00pm Sundays
Bassetlaw District Council, Queens Buildings, Potter St, Worksop S80 2AH	9:00am - 5:00pm Mondays - Fridays
Newark and Sherwood District Council, Castle House, Great North Rd, Newark NG24 1BY	9:00am - 5:00pm Mondays - Fridays
West Lindsey District Council, Guildhall Marshall's Yard, Marshalls Yard, 13b Beaumont St, Gainsborough DN21 2NA	9:00am - 5:00pm Mondays - Fridays

Communication Channels

Throughout the consultation, we will operate the following communications channels for individuals to contact us with any questions:

-  www.oneearthsolarfarm.co.uk
-  info@oneearthsolarfarm.co.uk
-  0800 169 6507 (Answered from 9am - 5pm on weekdays)
-  One Earth Solar Farm, Freepost SEC NEWGATE UK LOCAL

Changes

If there are any changes needed to the arrangements described above including any changes to guidance due to COVID-19, we will notify the community by writing to addresses within Zone 1, elected officials, and community groups and updating our website.

Receiving Feedback

Individuals or groups can submit their written feedback by 9 July 2024 through various methods, including:

- By completing a questionnaire either in hard copy or online
- By writing or emailing the contact details on page 13



After the Statutory Consultation

Once the consultation has concluded, we will review the feedback we have received.

Any comments received will be analysed by One Earth Solar Farm Ltd and any of its appointed agents. Copies may be made available in due course to the Secretary of State, the Planning Inspectorate and other relevant statutory authorities so that feedback can be considered as part of the DCO process. We will request that any personal details are not placed on public record and will be held securely by One Earth Solar Farm Ltd and its agents in accordance with the data protection law and will be used solely in connection with the consultation process and subsequent DCO application and, except as noted above, will not be passed to third parties.

All feedback will be considered alongside the ongoing environmental assessments to help inform the updated design that will be submitted in the DCO application. Within the DCO application, we will include a Consultation Report that shows how we have had due regard to all consultation feedback, as well as how we complied with the approach to consultation set out in this document.



The Planning Inspectorate has also published details of how it manages comments received in a Privacy Notice available on its website:
https://assets.publishing.service.gov.uk/government/uploads/system/uploads/attachment_data/file/879604/Privacy_Note_Final_15042020.pdf

Ongoing Engagement

Our communications channels will remain open throughout the pre-application process to answer any questions from the community. We will provide a community update newsletter after the consultation has ended to describe the project's next steps. If there are any significant changes to the project, we may be required to host a targeted consultation on the project changes. In that case, we would notify the community in line with the requirements of the Planning Act 2008, PINS guidance, and the approach described in this document.



Get in touch



www.oneearthsolarfarm.co.uk



info@oneearthsolarfarm.co.uk



0800 169 6507



One Earth Solar Farm,
Freepost SEC NEWGATE UK LOCAL



Appendix C-4 – Regard had to host authority formal feedback on draft SoCC

Table C-2 – Formal feedback from host authorities regarding draft SoCC and the Applicant's response

Consultee	Feedback	Applicant Response
Newark and Sherwood	We note under the heading of 'Scoping' a hyperlink is provided to a copy of the Scoping Opinion on the PINS website, which makes an assumption that an electronic version of the SOCC is being read. We would recommend that the full web address be provided in the document at this point. Whilst we note that the EIA Scoping Opinion is a document produced and published by PINS, we would further recommend the applicant consider whether a hard copy of this document should also be made available for review during the statutory consultation period, alongside other hard copies of documents, that will be provided for review in the Community Access Points (See Page 10 of the SOCC).	The full link was updated by the Applicant along with a QR code. It was noted that the scoping opinion is not necessary to provide in hard copy as it is largely technical.
Newark and Sherwood	Paragraph 1, page 8, refers to 'We have developed the approach set out in this document taking into account what has worked well in previous rounds of consultation.' For clarity, we would recommend reference is made to the single previous round of non-statutory consultation at this point.	The Applicant updated to clarify one round of consultation.

Consultee	Feedback	Applicant Response
Newark and Sherwood	<p>Under the heading of 'Feedback from Local Authorities' firstly, in terms of the period of consultation, we note that reference is made to the incorrect consultation period for the SOCC document. As noted above, the end of the statutory consultation period is the 4 May 2024 and not the 2 May 2024. We also have concerns with the following comments in the same paragraph which states: 'Our strategy has been updated to include their feedback (insert details here). XX confirmed that they supported this approach.' NSDC consider this to be a pre-emptive comment and it is particularly concerning that an assumed reference to support is made which prejudices the outcome of the consultation on the SOCC itself. NSDC considers it would have been more appropriate to omit this reference or simply refer to the fact that the comments of the Local Authorities would be taken into account following the conclusion of the statutory consultation period on the SOCC and prior to its publication and commencement of the statutory consultation. NSDC considers that this pre-emptive approach undermines the statutory duty of the applicant to 'have regard' to the response to the consultation, under Section 47(5) of the Planning Act 2008.</p>	<p>The section was updated by the Applicant to show how the SOCC was updated per feedback, with no statement that any of the LPAs confirmed they agreed.</p>
Newark and Sherwood	<p>NSDC note and welcome the presentation of a Consultation Zone that includes the boundary of the scheme and the further inclusion of additional addresses in the proposed Zone 1 consultation. However, for the avoidance of doubt, it is recommended that all named settlements within Zone 1 that are to be consulted are either identified within the map or are listed for clarity. It would appear to NSDC that all of the settlements within the district boundary at this location to include North Clifton, South Clifton, Thorney, Spalford, Wigsley and Harby would be directly consulted. If that is the case, we are supportive of the proposed Consultation Zone 1.</p>	<p>The Applicant updated the map to add more village labels. However, it was noted that Harby is not within the consultation zone because it is more than 3km away from the project boundary.</p>

Consultee	Feedback	Applicant Response
Newark and Sherwood	Under the Heading of Zone 2: 'Additional members of the community, groups, and elected officials' it is stated that 'We have identified organisations and community groups that serve the broader community, including organisations that support seldom heard groups.' Firstly, we have provided specific comments on the community groups to be consulted, as provided under separate cover. However, there is no reference to how the applicant will endeavour to engage with these groups and support their ability to feed back as part of the consultation. NSDC seeks reassurance on the measures that will be deployed to positively engage with seldom heard groups, as part of the consultation process. This needs to extend beyond mere identification of the groups.	The Applicant added a clarifying section to explain that we've identified the groups and the ways we will contact them. The contact methods are described on the following page.
Newark and Sherwood	In respect of the actions listed on page 11, we are broadly supportive of the approach, but would make the following comments, some of which we have provided previously, when undertaking an informal review of the SOCC: A copy of the consultation leaflet and poster to be displayed, should be appended to the final version of the SOCC and in the case of posters, confirmation of where they will be displayed. • A copy of the public notices should also be appended to the SOCC. • NSDC should be provided with a copy of any press notices issued and the media outlets that they have been provided to.	The Applicant noted that the consultation materials would not be available until the start of the consultation period. In order to provide the SOCC in advance of the start of consultation, it was not possible to publish it with all of the consultation materials attached.
Newark and Sherwood	Finally, we would ask what consideration has been given to the role of social media in supporting consultation and as a supplement to the project website. This may also help with regard to the approach to engaging with hard-to-reach groups.	The Applicant used social media through Facebook advertisements and clarified this in the SOCC.

Consultee	Feedback	Applicant Response
Newark and Sherwood	<p>In respect of 'in person' events, we welcome the inclusion of an additional event to be held at South Clifton Coronation Hall, following the proposal of a single event only during the informal consultation stage. Whilst noting that South Clifton Hall is an appropriate venue for a consultation, NSDC would encourage consideration for whether St Helen's Church in Thorney, could also support an additional community consultation event, noting it is currently also listed as a Community Access Point, facilitating access to hard copies of the SOCC, project booklet and questionnaire. If deemed a suitable venue, it would provide more convenient access to those members of the community that reside to the eastern side of the proposed development and have a greater distance to travel to access an 'in person' consultation event.</p>	<p>The Applicant considered this option, but did not believe it to be suitable for an event because it is a small, non- wheelchair accessible location.</p>
Newark and Sherwood	<p>In addition to the above and irrespective of whether the applicant chooses to add any additional events, NSDC consider that the current planned timings of the events are not sufficiently flexible to support maximum attendance. The event planned for Wednesday the 12th of June is proposed as 2-6pm. This is considered too small a time window in general terms. It excludes the ability for people in employment to attend over lunchtime and is considered to finish too early, to allow those people who wish to attend after work, particularly if they do not work in the locality and have to travel home and/or to the venue. To address this point, we would suggest the event run for a minimum of 12 noon – 8pm. Similarly, whilst being on a weekend, which in itself offers more flexibility, NSDC consider that the hours of opening for the 29th of June event should be increased and operate for a minimum of 8 hours.</p>	<p>The Applicant did not expect any single event to be universally accommodating for everyone who may want to attend, which is why the Applicant proposed a series of events, across different times of day and days of the week, including two Saturday events to accommodate those who work traditional 9-5 hours. In the Applicant's experience, 4 hours is a sufficient amount of time for an event, and adding additional hours does not increase attendance. However, the Applicant shifted the hours of the 7 June event further into the evening (4pm-8pm) outside of traditional working hours.</p>

Consultee	Feedback	Applicant Response
Newark and Sherwood	Finally, given the level of organisation required is more limited and it is convenient for all parties (that have access to the internet) we would recommend a minimum of at least one further webinar event. In our view one webinar at the beginning of the consultation period, one at the midway point and one further and final one at the end of the consultation period would complement the planned in-person events.	The Applicant added a second consultation webinar.
Newark and Sherwood	Turning to the 'Information Materials' we note that reference is made to (amongst other things) maps to be produced and made available on the project website. We would encourage use of an interactive mapping tool that enables interested parties to search on a micro scale of their area of interest, that provides information on both the proposals and constraints. Given the scale of development, we consider that tools such as this are important in understanding the impacts of the project and therefore support meaningful engagement.	The Applicant provided a 3d model which was made available at the events with a video flyover on the website. The Applicant believed this was more helpful than a searchable map, which would not provide context.
Newark and Sherwood	Finally, in respect of Communication Channels, we would encourage the applicant to consider the use of social media. In accordance with the Council's SCI, we actively deploy social media channels, with regard to consultation on the local plan and other strategic proposals. We consider it useful in engaging with different parts of the community, including 'hard to reach groups.'	The Applicant updated to include advertisements on Facebook.
Newark and Sherwood	In respect of Receiving Feedback, NSDC considers that it would be useful in this section to link back into the Communication Channels with greater explanation on: How feedback will be recorded via the freephone number. How feedback will be recorded verbally in person and via the planned webinars and in respect of the latter, whether those webinars will be recorded and made available to all parties, including (as relevant) the period of time for which they will be made available.	The Applicant was not able to use verbal feedback because it cannot be adequately recorded, however, the Applicant offered transcription services if needed, upon request. The SOCC was updated to confirm this. The Applicant also noted that recorded webinars could be posted on the website.

Consultee	Feedback	Applicant Response
Newark and Sherwood	Finally, in respect of 'After the Statutory Consultation' we consider it appropriate to make clear that the applicant has a Statutory Duty under Section 49 of the Planning Act 2008 to have regard to the response to the consultation, as a point of clarity and consider this could sensibly be added where reference is made to the Consultation Report.	The Applicant updated to clarify that it is a statutory requirement.
Nottinghamshire	I would however like to draw your attention to "Zone 2: Additional members of the community, groups, and elected officials" on p.10. The figure identifies the relevant district wards but it should be noted that the district ward is distinct from the county electoral division, which is a separate geographical boundary usually with a separate elected official. We would obviously recommend that the elected official for the county division is contacted in addition to the district ward member.	The Applicant updated the table to show the list of county electoral divisions.
Bassetlaw	The map included here (and also the one on page 10) is of a scale that makes it difficult to see the details of which communities are impacted / involved, not helped by the lack of labels on specific communities, and the use of a solid green wash. A clearer map would help all parties to better understand the proposals and engagement strategy in context.	The Applicant updated the maps to show more labels of local villages.
Bassetlaw	It is not clear if / how responses from people and organisations based outside of the core consultation zones will be addressed (for instance, people who have land interests in the area but are not physically based there). The assumption is that the identified zones are for publicity purposes, not for limiting where responses will be received from. This could be made clearer in the description.	The Applicant updated the SOCC to state clearly that anyone may submit feedback.
Bassetlaw	Alongside the above, the list of parishes in the Host Regions table do not include all of those within Consultation Zone 1 shown on the map. In Bassetlaw, the additions to complete the list would be East Drayton, Laneham, and Normanton on Trent (all of which are in the Tuxford and Trent Ward). These parishes should be included in any other elements of the engagement strategy that involves Consultation Zone 1.	The Applicant clarified that they would contact all the parishes in Zone 1

Consultee	Feedback	Applicant Response
Bassetlaw	It would be advisable to host some of the in-person events into the evening, beyond the current limit of 6 pm, so as to accommodate people who may not be at home during the daytime.	The Applicant shifted the hours of the first event (7 June) back to 4-8pm
Bassetlaw	An additional Community Access Point in Bassetlaw may be useful, given that Worksop is some distance from the Consultation Zone. Cobbs Country Store in Darlton could be a possible (subject to agreement), as might the District Council's offices in Retford, Retford Library, or Nottinghamshire County Council's Mobile Library when based in Tuxford (Mondays, 10:15 AM to 1:15 PM).	The Applicant added the district council in Retford.
Bassetlaw	It would be helpful to detail if / how you will notify respondents (i.e. acknowledge receipt of their comments, provide a means to opt-in for further updates, notify them of how their comments have been used).	The Applicant clarified in the SOCC that people can opt in for project updates. However, it was noted that it is not feasible to confirm receipt of online questionnaires.
Bassetlaw	<p>Amongst the obvious community groups, there are a number of other organisations listed in the table, and the following may be useful additions:</p> <ul style="list-style-type: none"> • Bassetlaw Action Centre • Bassetlaw CVS • Historic England • Lincolnshire County Council Archaeology • Natural England 	The Applicant added the three new groups but noted that Historic England and Natural England are already statutory consultees.
Lincolnshire	1. Community access points for documents - look for more local points that have longer opening hours	The Applicant added an additional access location option in Retford.
Lincolnshire	2. Communications channels – consider offering an answer phone and a callback option	The Applicant updated the SOCC to clarify that there is a voicemail option to leave a message.



one earth
solar farm

oneearthsolarfarm.co.uk